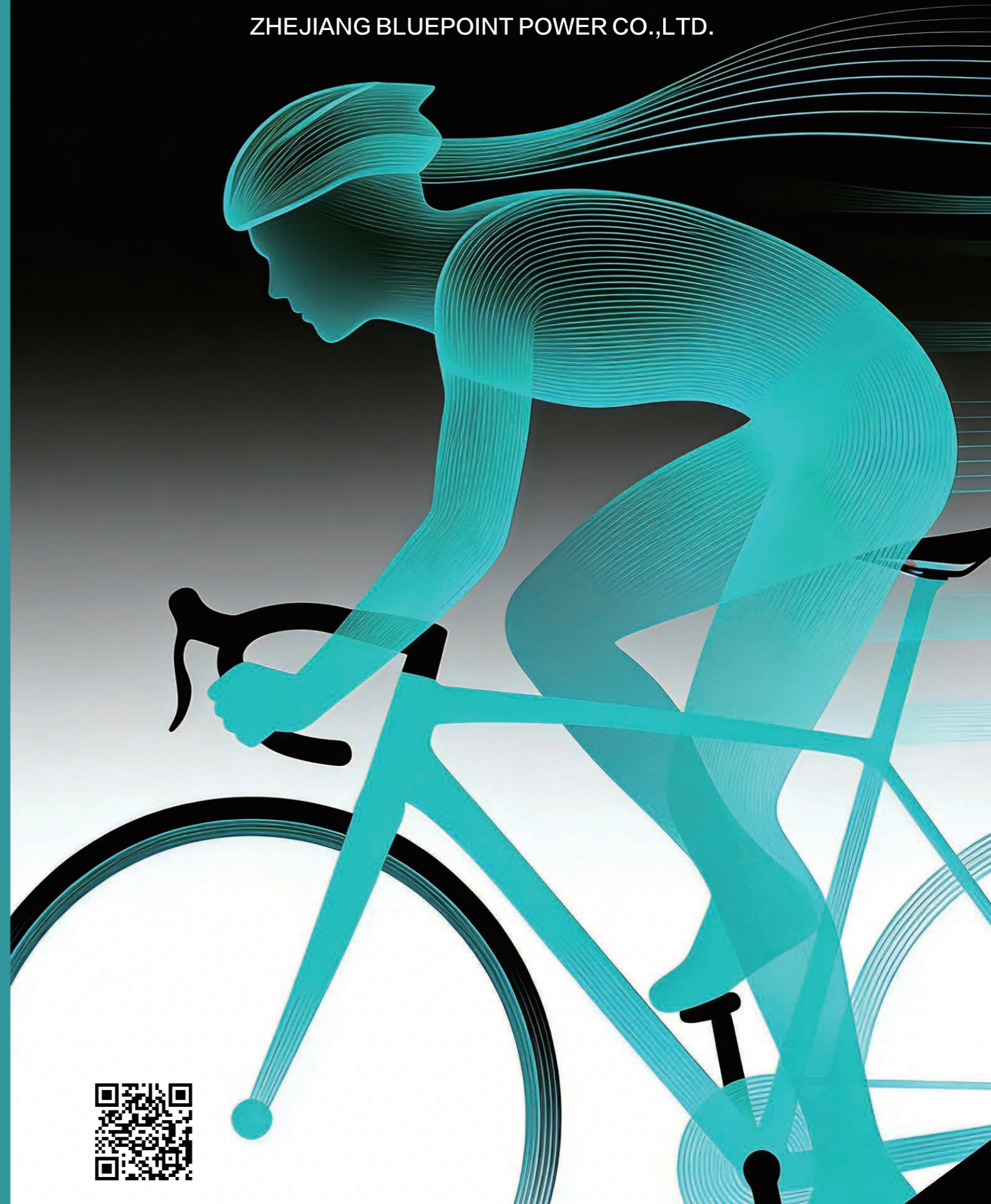


浙江蓝点动力有限公司

ZHEJIANG BLUEPOINT POWER CO.,LTD.



浙江蓝点动力有限公司

ZHEJIANG BLUEPOINT POWER CO.,LTD.

+86 571 86131893

lddl@ld-zj.com

<https://www.ld-zj.com>

研发中心 R&D center

杭州市临平区东湖街道东湖北路488-1号19幢

Bld 19, No. 488-1, North Donghu Road, Linping District, Hangzhou City, Zhejiang Province, China.

生产基地 production base

浙江省湖州市德清县阜溪街道环城北路 889 号 33 号楼

Bld 33, No. 889 North Huan Cheng Road, Fuxi Street, Deqing County, Huzhou City, Zhejiang Province, China





+



+



E-Bike 系统
E-Bike System

软件服务
Software Service

售后服务
After-sales Service



目录 TABLE OF CONTENT

公司简介 / About Our Company	P4~P7
资质及认证 / certification	P8~P9
控制器 XC06S001 / Controller XC06S001	P11
控制器 XC06S002 / Controller XC06S002	P11
控制器 ZL06S019 / Controller ZL06S019	P12
控制器 ZL06S011 / Controller ZL06S011	P12
控制器 XC09S005 / Controller XC09S005	P13
控制器 ZL09D012 / Controller ZL09D012	P13
控制器 XC12S006 / Controller XC12S006	P14
控制器 XC12S007 / Controller XC12S007	P14
控制器 XC12D006 / Controller XC12D006	P15
控制器 ZL12S013 / Controller ZL12S013	P15
控制器外壳 / Controller Housing	P16~P17
仪表 W108 / Display W108	P19
仪表 W780 / Display W780	P19
仪表C351 / Display C351	P20
仪表C352 / Display C352	P20
仪表C353 / Display C353	P21
速度传感器 / Speed Sensor	P23
力矩传感器 / Torque sensor	P24
双电池均衡器 / Dual battery balancer	P25
智能双电池模块 / Intelligent Dual Battery Module	P26
智能离线编程器 / Intelligent Off-line Programmer	P26
双驱控制器介绍 / Introduction of dual-drive	P27

公司简介 About Our Company

浙江蓝点动力有限公司，前身为杭州仙童电子技术有限公司。创办于2004年，坐落于杭州市临平区，设有研发中心和生产基地达八千平方米，拥有丰富的开发和制造能力，产品远销中东、欧美全球各地，服务上百家客户，获得了业界的广泛好评。

蓝点深耕行业二十年，一直致力于高端电动车驱动系统的研发，在无刷直流电机控制系统领域处于行业领先地位，为客户的移动出行提供多种解决方案，主要产品有中驱电机控制器系列，双驱控制器系列，型材控制器系列，车载仪表，双霍尔传感器等，2020年销售额突破1.7亿，2021年销售额突破3亿。

蓝点一路前行，不断进取，以开发高信赖产品为目标，不断提升竞争力，争做控制器行业的技术领导者。

Zhejiang Bluepoint Power Co., Ltd. formerly known as Hangzhou Xiantong Electronic Technology Co., Ltd. Founded in 2004, located in Linping District, Hangzhou City, with R & D center and production base of 8,000 square meters, with rich development and manufacturing capabilities, products are exported to the Middle East, Europe and the United States all over the world, serving hundreds of customers, has been widely praised by the industry.

Bluepoint Power has been deeply engaged in the industry for 20 years, has been committed to the research and development of high-end electric vehicle drive systems, in the field of brushless DC motor control system leading in the industry. providing customers with a variety of solutions for e-mobility, the main products are mid-drive motor controller series, dual-drive controller series, profile controller series, vehicle display, dual-hall sensors, etc., sales exceeded 170 million in 2020 and sales exceeded 300 million in 2021.

Bluepoint Power is moving forward all the way, constantly forging ahead, aiming to develop high-reliability products, constantly improving competitiveness, and striving to become a technology leader in the controller industry.



合作品牌 Cooperative brand



服务区域 service area



研发中心 R&D center

研发中心拥有一支技术强、专业精、团队协作精神优秀的团队,现有20余名员工,致力于新技术、新工艺、新产品的研发。

The R&D Centre has a team with strong technology, professionalism and excellent teamwork spirit , There are more than 20 employees here, who are committed to the research and development of new technology, new techniques and new products.



解决方案 solution

软件：提供底层驱动方案及功能逻辑。

硬件：各种款式的控制器、仪表、传感器。

售后：提供专业、高效的售后服务。



生产基地 production base

生产基地位于湖州市德清县, 厂房总面积4千多平方米, 配有标准的现代化厂房、先进的检测设备及生产流水线。

The production base is located in Deqing County, Huzhou City, the total area of the plant is more than 4,000 square metres, equipped with standard modern plant, advanced testing equipment and production lines.



仪表车间 | Display Workshop



控制器车间 | Controller Workshop



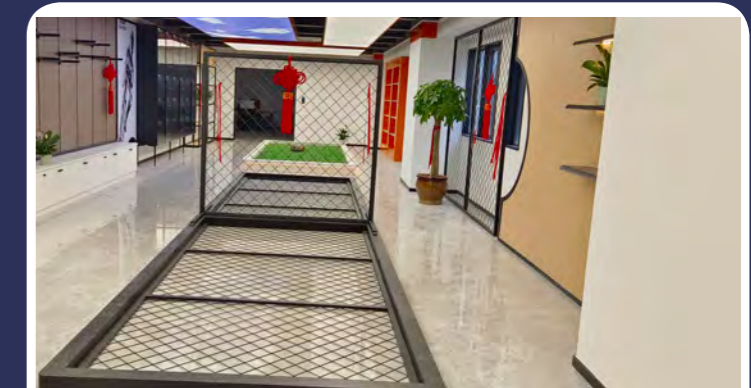
仓库 | Repository



办公区 | Office



会议室 | Meeting Room



产品展示区 | Product Display Area

资质及认证 Qualification and certification



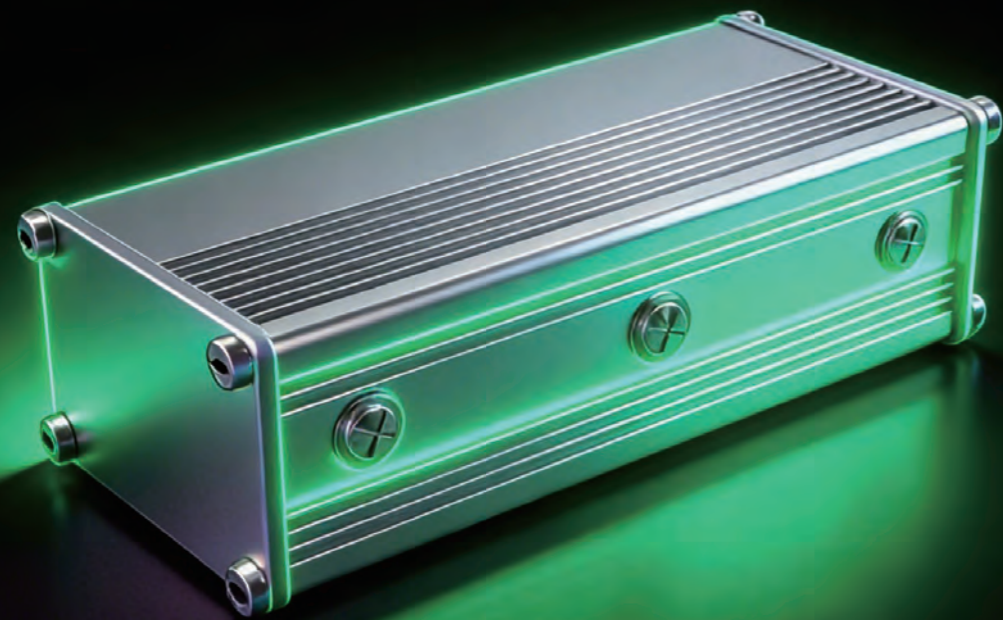
控制器 Controller

控制器是电控系统的核心配件之一，如人的“大脑”，通过传感器感知骑行状态，通过构建巧妙数学模型，控制电机输出恰到好处的动力，使“人车合一”，让骑行变成了一种乐趣。

A controller is a fundamental part of the electronic control system. It connects the sensors as “human brain” to know working status, and to use some sophisticated measurements in order to know how much power should be headed to the motor, making you feel becoming one with the car, Make riding a pleasure.

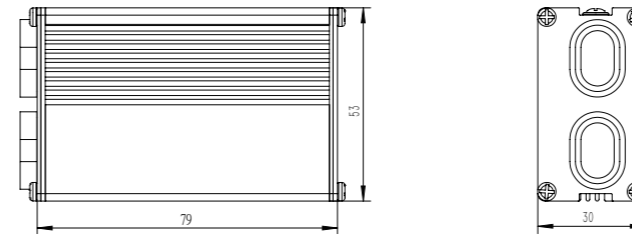
产品型号 PRODUCTS

- XC06S001 XC06S002 ZL06S019 ZL06S011 XC09S005
 ZL09D012 XC12S006 XC12S007 XC12D006 ZL12S013



控制器 XC065001

CONTROLLER XC065001

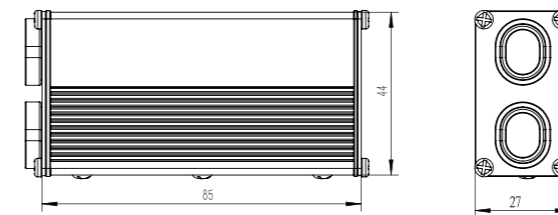


Product Parameters 产品参数

Rated Voltage (DCV) 额定电压	24/36/48
Low Voltage Protection(DCV) 欠压	21/31/40
Current Limit (Max A) 限流	15 or 18(Optional)
Rated Power (W) 额定功率	250/350
Operating Temperature(° C) 工作温度	-20~45° C
Size (mm) 尺寸	79*53*30
Com.protocol 通信协议	UART/CAN
Control Type 控制类型	Sine Wave正弦
Adaptation Motor适配电机	Hall Motor霍尔电机
Support Mode 档位	0-9
Static Power (W) 静态功率	<2
Walk Assistance (km/h) 助推	4~6
E-Brake 电子制动	Yes
IP level 防水等级	IPX5
Light Drive Capacity(DCV / W) 大灯驱动能力	6/3(max) 36/15(max)
PAS Mode PAS助力模式	Speed速度 Speed and Torque Integrated 速度和力矩组合
Certification 认证	CE/EN ISO 13849/ ROHS/UL 2849

控制器 XC065002

CONTROLLER XC065002



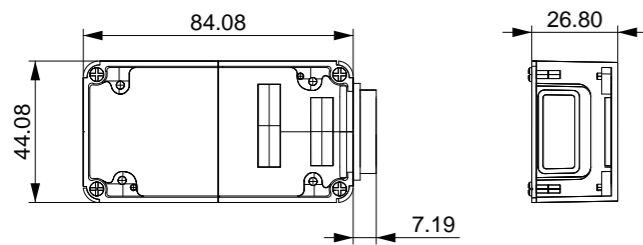
Product Parameters 产品参数

Rated Voltage (DCV) 额定电压	24/36/48
Low Voltage Protection(DCV) 欠压	21/31/40
Current Limit (Max A) 限流	15 or 18(Optional)
Rated Power (W) 额定功率	250/350
Operating Temperature(° C) 工作温度	-20~45° C
Size (mm) 尺寸	85*44*27
Com.protocol 通信协议	UART/CAN
Control Type 控制类型	Sine Wave正弦
Adaptation Motor适配电机	Hall Motor霍尔电机
Support Mode 档位	0-9
Static Power (W) 静态功率	<2
Walk Assistance (km/h) 助推	4~6
E-Brake 电子制动	Yes
IP level 防水等级	IPX5
Light Drive Capacity(DCV / W) 大灯驱动能力	6/3(max) 36/15(max)
PAS Mode PAS助力模式	Speed速度 Speed and Torque Integrated 速度和力矩组合
Certification 认证	CE/EN ISO 13849/ ROHS/UL 2849

Product Features 产品特点

- Built-in light module is adaptable with 6V/12V/36V/48V lights 内置灯模块，可搭配6V/12V/36V/48V车灯
- With small and light weight structure, it can be placed in tubes with a diameter of 50mm. 整体结构小巧轻便，可以放入直径为50mm的管体内

控制器 ZL065019

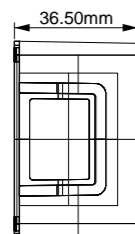
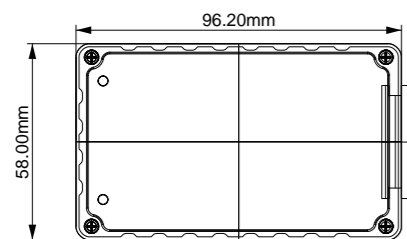


CONTROLLER ZL065019

Product Parameters 产品参数

Rated Voltage (DCV) 额定电压	24/36/48/52
Low Voltage Protection(DCV) 欠压	21/31/40/43
Current Limit (Max A) 限流	15
Rated Power (W) 额定功率	250/350/500
Operating Temperature(° C) 工作温度	-20~45° C
Size (mm) 尺寸	84*44*26.8
Com.protocol 通信协议	UART/CAN
Control Type 控制类型	Sine Wave正弦
Adaptation Motor适配电机	Hall Motor霍尔电机
Support Mode 档位	0-9
Static Power (W) 静态功率	<2
Walk Assistance (km/h) 助推	4~6
E-Brake 电子制动	Yes
IP level 防水等级	IPX5
Light Drive Capacity(DCV / W) 大灯驱动能力	6/3(max) 36/15(max)
PAS Mode PAS助力模式	Speed速度 Speed and Torque Integrated 速度和力矩组合
Certification 认证	CE/EN ISO 13849/ ROHS

控制器 ZL065011

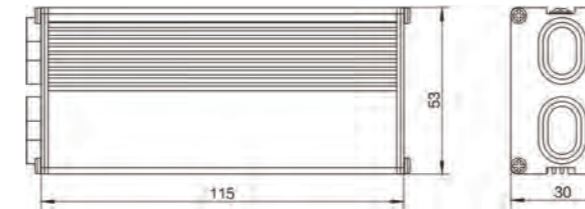


CONTROLLER ZL065011

Product Parameters 产品参数

Rated Voltage (DCV) 额定电压	24/36/48/52
Low Voltage Protection(DCV) 欠压	21/31/40/43
Current Limit (Max A) 限流	20 or 25 or 30 (Optional)
Rated Power (W) 额定功率	250/350/500/750
Operating Temperature(° C) 工作温度	-20~45° C
Size (mm) 尺寸	96.2*58*36.5
Com.protocol 通信协议	UART/CAN
Control Type 控制类型	Sine Wave正弦
Adaptation Motor适配电机	Hall Motor霍尔电机
Support Mode 档位	0-9
Static Power (W) 静态功率	<2
Walk Assistance (km/h) 助推	4~6
E-Brake 电子制动	Yes
IP level 防水等级	IPX5
Light Drive Capacity(DCV / W) 大灯驱动能力	6/3(max) 36/15(max)
PAS Mode PAS助力模式	Speed速度 Speed and Torque Integrated 速度和力矩组合
Certification 认证	CE/EN ISO 13849/ROHS

控制器 XC095005



CONTROLLER XC095005

Product Parameters 产品参数

Rated Voltage (DCV) 额定电压	36/48/52
Low Voltage Protection(DCV) 欠压	31/40/43
Current Limit (Max A) 限流	22
Rated Power (W) 额定功率	350/500/750
Operating Temperature(° C) 工作温度	-20~45° C
Size (mm) 尺寸	115*53*30
Com.protocol 通信协议	UART/CAN
Control Type 控制类型	Sine Wave正弦
Adaptation Motor适配电机	Hall Motor霍尔电机
Support Mode 档位	0-9
Static Power (W) 静态功率	<2
Walk Assistance (km/h) 助推	4~6
E-Brake 电子制动	Yes
IP level 防水等级	IPX5
Light Drive Capacity(DCV / W) 大灯驱动能力	6/3(max) 36/15(max)
PAS Mode PAS助力模式	Speed速度 Speed and Torque Integrated 速度和力矩组合
Certification 认证	CE/EN ISO 13849/ ROHS/UL 2849

控制器 ZL09D012



Product Features 产品特点

- Two sets of in-wheel hub motors both front and rear generate more power of a vehicle. 实现同时驱动前后两组轮毂电机，动力更强劲
- No differential speed ensures you a smooth acceleration. 解决双电机运转产生的差速问题，提速更平稳
- Front wheel drive, rear wheel drive, or all-wheel drive can be switched easily. 前驱、后驱、前后驱可随意切换，骑行更顺畅
- Design of the master-slave motor control systems enable you a safer driving. 两组电机控制系统互为主从关系，驾驶更安全

CONTROLLER ZL09D012

Product Parameters 产品参数

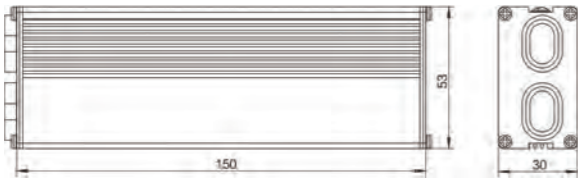
Rated Voltage (DCV) 额定电压	48/52
Low Voltage Protection(DCV) 欠压	40/43
Current Limit (Max A) 限流	22*2
Rated Power (W) 额定功率	500*2/750*2
Operating Temperature(° C) 工作温度	-20~45° C
Size (mm) 尺寸	130*62*65
Com.protocol 通信协议	UART/CAN
Control Type 控制类型	Sine Wave正弦
Adaptation Motor适配电机	Hall Motor霍尔电机
Support Mode 档位	0-9
Static Power (W) 静态功率	<4
Walk Assistance (km/h) 助推	4~6
E-Brake 电子制动	Yes
IP level 防水等级	IPX5
Light Drive Capacity(DCV / W) 大灯驱动能力	6/3(max) 36/15(max)
PAS Mode PAS助力模式	Speed速度 Speed and Torque Integrated 速度和力矩组合
Certification 认证	CE/EN ISO 13849/ ROHS

控制器 XC125006

CONTROLLER XC125006

Product Parameters 产品参数

Rated Voltage (DCV) 额定电压	36/48/52
Low Voltage Protection(DCV) 欠压	31/40/43
Current Limit (Max A) 限流	30 or 36(Optional)
Rated Power (W) 额定功率	500/750/1000
Operating Temperature(° C) 工作温度	-20~45° C
Size (mm) 尺寸	150*53*30
Com.protocol 通信协议	UART/CAN
Control Type 控制类型	Sine Wave正弦
Adaptation Motor适配电机	Hall Motor霍尔电机
Support Mode 档位	0-9
Static Power (W) 静态功率	<2
Walk Assistance (km/h) 助推	4~6
E-Brake 电子制动	Yes
IP level 防水等级	IP X5
Light Drive Capacity(DCV / W) 大灯驱动能力	6/3(max) 36/15(max)
PAS Mode PAS助力模式	Speed速度 Speed and Torque Integrated 速度和力矩组合
Certification 认证	CE/EN ISO 13849/ ROHS/UL 2849

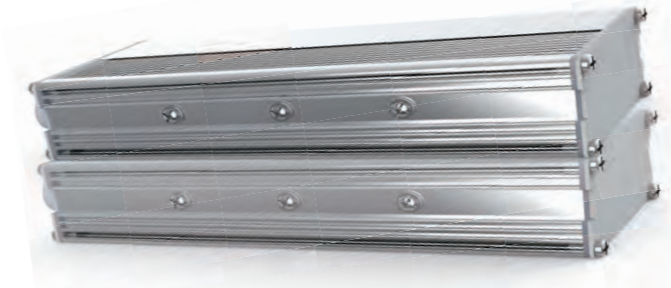


控制器 XC12D006

CONTROLLER XC12D006

Product Parameters 产品参数

Rated Voltage (DCV) 额定电压	36/48/52
Low Voltage Protection(DCV) 欠压	31/40/43
Current Limit (Max A) 限流	30*2 or 36*2(Optional)
Rated Power (W) 额定功率	500/750/1000
Operating Temperature(° C) 工作温度	-20~45° C
Size (mm) 尺寸	150*53*30
Com.protocol 通信协议	UART/CAN
Control Type 控制类型	Sine Wave正弦
Adaptation Motor适配电机	Hall Motor霍尔电机
Support Mode 档位	0-9
Static Power (W) 静态功率	<4
Walk Assistance (km/h) 助推	4~6
E-Brake 电子制动	Yes
IP level 防水等级	IP X5
Light Drive Capacity(DCV / W) 大灯驱动能力	6/3(max) 36/15(max)
PAS Mode PAS助力模式	Speed速度 Speed and Torque Integrated 速度和力矩组合
Certification 认证	CE/EN ISO 13849/ ROHS

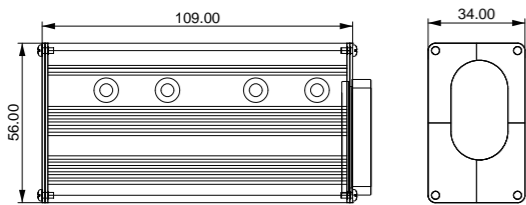
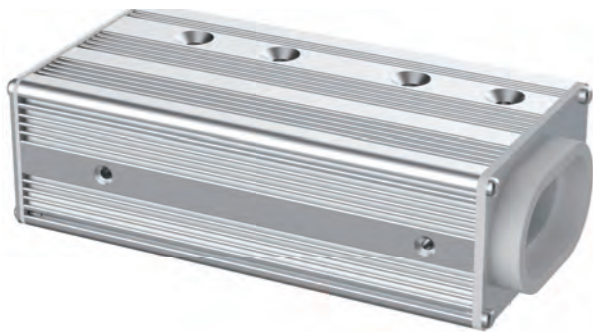


控制器 XC125007

CONTROLLER XC125007

Product Parameters 产品参数

Rated Voltage (DCV) 额定电压	36/48/52
Low Voltage Protection(DCV) 欠压	31/40/43
Current Limit (Max A) 限流	30 or 36(Optional)
Rated Power (W) 额定功率	500/750/1000
Operating Temperature(° C) 工作温度	-20~45° C
Size (mm) 尺寸	109*56*34
Com.protocol 通信协议	UART/CAN
Control Type 控制类型	Sine Wave正弦
Adaptation Motor适配电机	Hall Motor霍尔电机
Support Mode 档位	0-9
Static Power (W) 静态功率	<2
Walk Assistance (km/h) 助推	4~6
E-Brake 电子制动	Yes
IP level 防水等级	IPX5
Light Drive Capacity(DCV / W) 大灯驱动能力	6/3(max) 36/15(max)
PAS Mode PAS助力模式	Speed速度 Speed and Torque Integrated 速度和力矩组合
Certification 认证	CE/EN ISO 13849/ ROHS/UL 2849

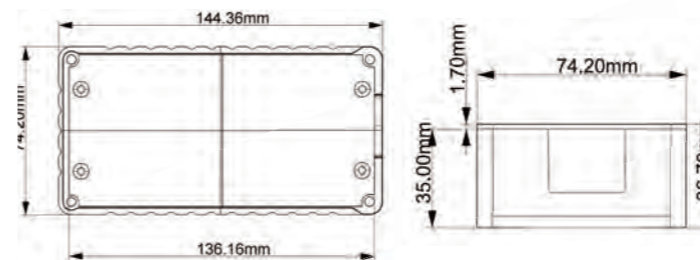


控制器 ZL125013

CONTROLLER ZL125013

Product Parameters 产品参数

Rated Voltage (DCV) 额定电压	48/52/60/72
Low Voltage Protection(DCV) 欠压	40/43/52/63
Current Limit (Max A) 限流	30~50
Rated Power (W) 额定功率	1500/2500
Operating Temperature(° C) 工作温度	-20~45° C
Size (mm) 尺寸	144*74.2*36.7
Com.protocol 通信协议	UART/CAN
Control Type 控制类型	Sine Wave正弦
Adaptation Motor适配电机	Hall Motor霍尔电机
Support Mode 档位	0-9
Static Power (W) 静态功率	<2
Walk Assistance (km/h) 助推	4~6
E-Brake 电子制动	Yes
IP level 防水等级	IPX5
Light Drive Capacity(DCV / W) 大灯驱动能力	6/3(max) 36/15(max)
PAS Mode PAS助力模式	Speed速度 Speed and Torque Integrated 速度和力矩组合
Certification 认证	CE/EN ISO 13849/ ROHS/UL 2849



控制器外壳 ZS206

Controller Housing ZS206

Product Parameters 产品参数

Model Name 型号名称	ZS206
Size (mm) 尺寸	209*52*31
Adaptive Controller 适配控制器	6T/9T/12T/ Dual
Shell Material 壳体材料	Aluminum铝
Surface Appearance 外观颜色	Frosted Black磨砂黑
IP level 防水级别	IPX5
Certification 认证	CE/EN ISO 13849/ ROHS



HOI 控制器外壳

Controller Housing H01

Product Parameters 产品参数

Model Name 型号名称	LD-H1
Size (mm) 尺寸	122*49*32
Adaptive Controller 适配控制器	9T
Shell Material 壳体材料	Aluminum 铝
Surface Appearance 外观颜色	Frosted Black磨砂黑
IP level 防水级别	IPX5
Certification 认证	CE/EN ISO 13849/ ROHS



适配电池壳 Adaptive Battery Case

It can adapt to the battery shells of various mainstream controllers, such as dragon, polly, cuttle, etc.

适配各种主流带控制器电池壳，海龙、鹦鹉、海兔等

控制器外壳 Z01

Controller Housing Z01

Product Parameters 产品参数

Model Name 型号名称	LD-Z01
Size (mm) 尺寸	186*63*42
Adaptive Controller 适配控制器	12T/9T/6T
Shell Material 壳体材料	Aluminum铝
Surface Appearance 外观颜色	Frosted Black磨砂黑
IP level 防水级别	IPX5
Certification 认证	CE/EN ISO 13849/ ROHS



光芒 BRILLIANCE
Model:RB-1/2/3



海兔 CUTTLE
Model:DC-1C/2C



虎鲨 TIGERSHARK
Model:DS-4C/5C/6C



鹦鹉 POLLY
Model:DP-5C/6C/9C



袋鼠 KANGAROO
Model:RK-3C/4C



飞鱼 VULPECULA
Model:RV-5C



蜻蜓 DRAGONFLY
Model:IF-2C/3C/4C



仪表 Display

仪表是一个简单的“艺术品”主要起到开启系统和关闭控制系统，还有一个显示作用，电池电量，骑行速度，当前输出档位和输出模式等。也可以用来设置限速值，读取电池信息和电机信息，控制器信息等。

它是一个比较简单的展示工具。但往往客户对它的显示界面，外观设计，结构设计和防水设计等要求极高。容不得一点瑕疵！

Display is a simple art. Its main functions are turning on and off the control system, displaying battery power, riding speed, current output gear, output mode and so on. It can also be used for setting speed limit, monitoring status of battery, motor and controller.

Display also works as a simple display panel. However, customers are critical to its display interface, physical appearance, structure quality and waterproof level.

产品型号 PRODUCTS

W108 W780 C351 C352 C353



仪表 W108

Display W108



Product Parameters 产品参数

Display type 仪表类型	LCD
Rated Voltage (V) 额定电压	24/36/48
Support Modes 档位	0-3/0-5/0-9
Communication Protocol 通信协议	UART/CAN
IP level 防水等级	IP 65
Operating Temperature(° C) 工作温度	-20~45° C
Size (mm) 尺寸	107*58.4*13.5
Holder (mm) 支架	22.2/25.4/31.8

- Update firmware 固件升级
- Bluetooth 蓝牙
- Clock 时钟

仪表 W780

Display W780



Product Parameters 产品参数

Display type 仪表类型	LCD
Rated Voltage (V) 额定电压	24/36/48
Support Modes 档位	0-3/0-5/0-9
Communication Protocol 通信协议	UART/CAN
IP level 防水等级	IP 65
Operating Temperature(° C) 工作温度	-20~45° C
Size (mm) 尺寸	70*47.5*58.44
Holder (mm) 支架	22.2

- animation logo 开机动画
- Update firmware 固件升级
- Bluetooth 蓝牙

仪表 C351

Display C351



Product Parameters 产品参数

Display type 仪表类型	3.5 " TFT
Rated Voltage (V) 额定电压	24/36/48/52
Support Modes 档位	0-3/0-5/0-9
Communication Protocol 通信协议	UART/CAN
IP level 防水等级	IP 65
Operating Temperature(° C) 工作温度	-20~45° C
Size (mm) 尺寸	104.5*66*21
Holder (mm) 支架	22.2/25.4/31.8

- animation logo 开机动画
- Bluetooth 蓝牙
- Dual battery system 双电池系统
- USB power supply USB充电
- Update firmware 固件升级
- Clock 时钟
- Dual motor system 双电机系统

仪表 C353

Display C353



Product Parameters 产品参数

Display type 仪表类型	3.5 " TFT
Rated Voltage (V) 额定电压	24/36/48/52
Support Modes 档位	0-3/0-5/0-9
Communication Protocol 通信协议	UART/CAN
IP level 防水等级	IP 65
Operating Temperature(° C) 工作温度	-20~45° C
Size (mm) 尺寸	107*79.5*37
Holder (mm) 支架	22.2/25.4/31.8

- animation logo 开机动画
- Bluetooth 蓝牙
- Dual battery system 双电池系统
- Update firmware 固件升级
- Clock 时钟
- Dual motor system 双电机系统

仪表 C352

Display C352



Product Parameters 产品参数

Display type 仪表类型	3.5 " TFT
Rated Voltage (V) 额定电压	24/36/48/52
Support Modes 档位	0-3/0-5/0-9
Communication Protocol 通信协议	UART/CAN
IP level 防水等级	IP 65
Operating Temperature(° C) 工作温度	-20~45° C
Size (mm) 尺寸	116*78*21
Holder (mm) 支架	22.2/25.4/31.8

- animation logo 开机动画
- Bluetooth 蓝牙
- Dual battery system 双电池系统
- USB power supply USB充电
- Update firmware 固件升级
- Clock 时钟
- Dual motor system 双电机系统

传感器 Sensor

传感器就像是人的神经末梢，它能够“感知”您的骑行状态，并将这些物理状态转换成“大脑”能够接收和分析处理的电信号。在恰到好处时间让“大脑”控制引擎输出恰到好处的动力。让骑行者感受到仿佛自己骑的是一辆灵魂战车。

它是控制系统与自行车的信息纽带。没有他就像人失去了感官。

Sensors, like the nerve endings in human body, can detect your bike's working status and convert it into electrical signals that the "brain" can receive and analyze. It helps the controller to determine the perfect amount of power output to motor, giving you a feeling like riding a soul chariot.

Sensors are the connectors of controller and other components, just like the sense that human cannot lose.

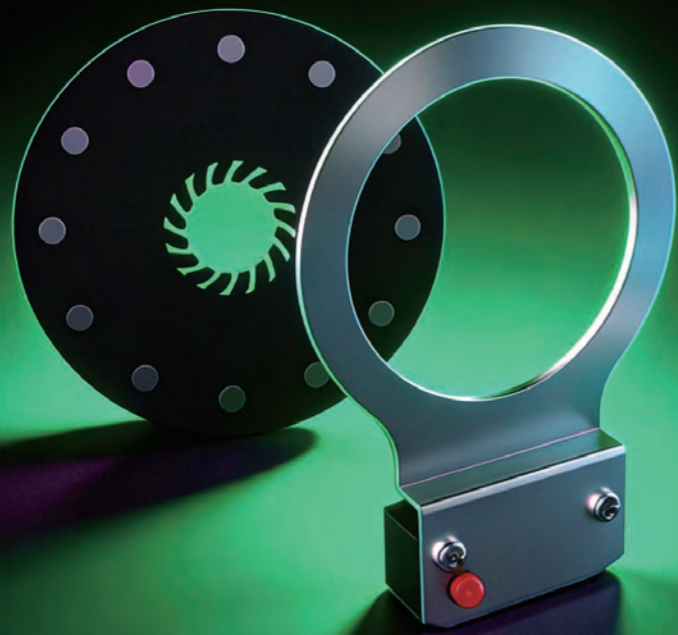
产品型号 PRODUCTS

LD-DH

LD-SD

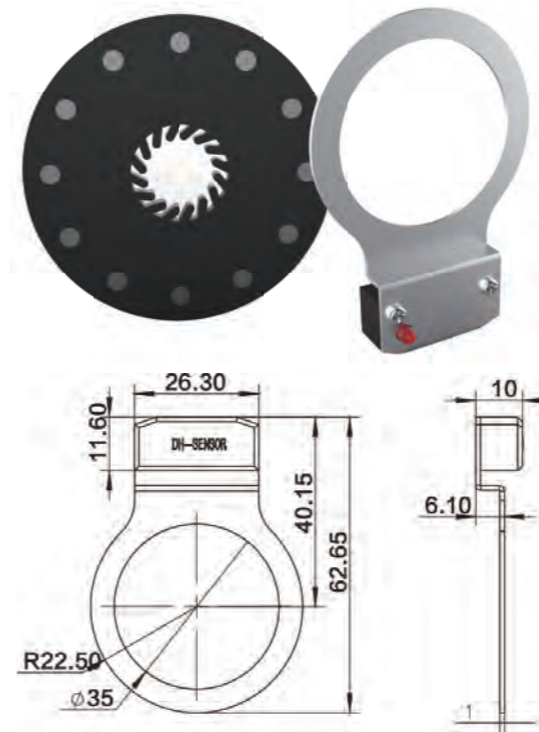
TORG2H

BBTS1/3



分体式速度传感器 LD-DH

Split Speed Sensor LD-DH

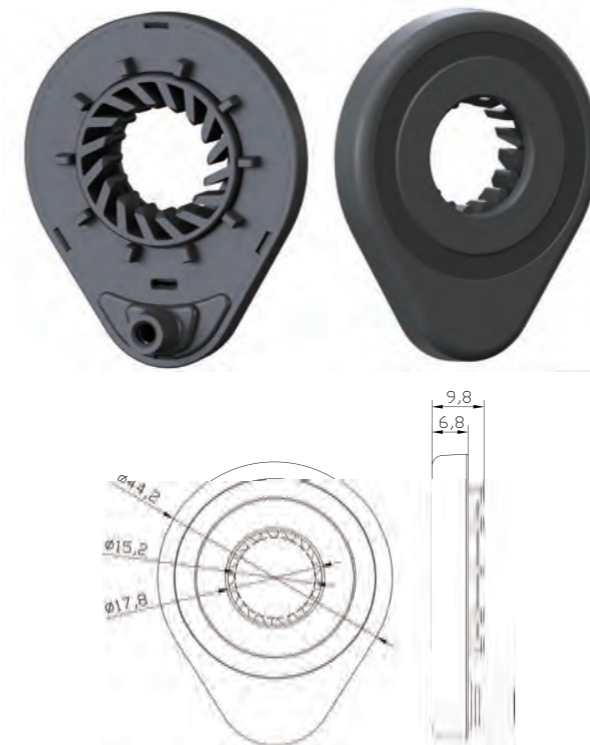


Product Parameters 产品参数

Shell Material 壳体材料	PA66
Entry Cable 出线方式	3-core
Size (mm) 尺寸	63*45*10
IP level 防水级别	IP 65
Number Of Magnetic Steel 磁钢数量	12
Surface Appearance 外观颜色	Frosted Black磨砂黑
Working Voltage(V) 工作电压	5
Static Power (W) 静态功率	<0.5
Certification 认证	CE/EN ISO 13849/ROHS

一体式速度传感器 LD-SD

Integrated Speed Sensor LD-SD



Product Parameters 产品参数

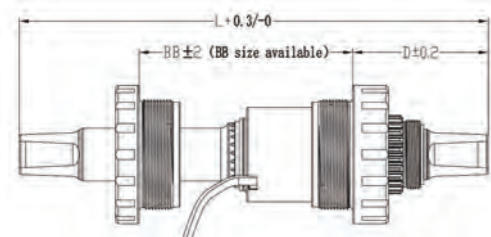
Working Voltage(V) 工作电压	4.0-5.5
Working Current(mA) 工作电流	10 (typ)
Size (mm) 尺寸	54*44*15.5
Number Of Signal 转一圈信号数量	12
Certification 认证	CE/EN ISO 13849/ROHS
Working Temperature 工作温度	-20-60° C
Pull-out Force Of Cable (N) 线材拉力	20-50
IPlevel 防水级别	IP 65

Product Features 产品特点

- The compact and light weight structure secure an easy installation and after-service.
整体结构小巧轻便，方便安装与售后；
- Five way installation has higher coaxiality and hall signal is more stable
五通安装同轴度更高，霍尔信号更均匀稳定；

中轴力矩传感器 TORG2H

Torque sensor TORG2H

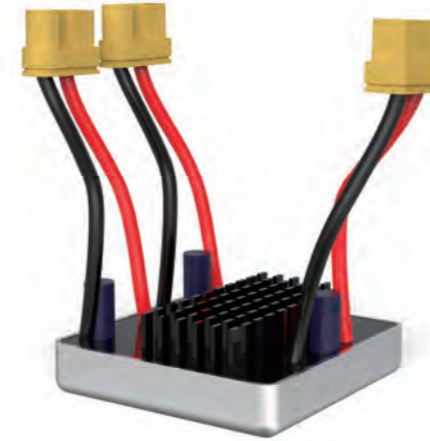


Product Parameters 产品参数

Working Voltage 额定电压	5V
Output Voltage(DCV) 力矩输出电压范围	0.7~4.8V
ZTV Initial Voltage ZTV 原点电压	0.7±0.05V
Torque Signal Resolution 力矩信号斜率	35mv/N.m
Cadence Signals (pulses/cycle): 踏频信号 (信号/周)	36 pcs
Duty Cycle 占空比	40~60%
Shaft 轴杆	JIS
Weight 重量	0.35kg(68/150mm)
Working Temperature 工作温度	-20 ~ 85°C
Waterproof Rating IP 等级	IP57
Certification 证书	EN14766
Patent 专利	National invention patent 国家发明专利

双电池均衡器 7260

Dual battery balancer 7260

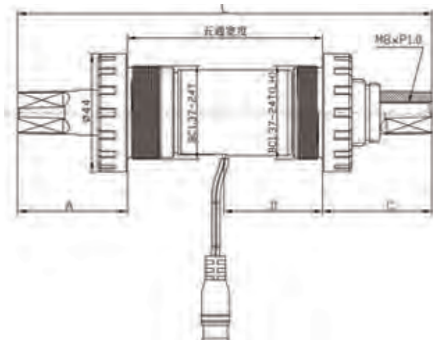


Product Parameters 产品参数

Size (mm) 尺寸	51.8*41.3*10.5
Operating Voltage (V) 工作电压	7V~72V
Maximum single pass current (A) 最大单路通过电流	30A (≤8min)
Maximum double pass current (A) 最大双路通过电流	60A (≤8min)
Single continuous working current (A) 单路持续工作电流	20A
Double continuous working current (A) 双路持续工作电流	40A
Standby current (mA) 待机电流	4mA
Operating Temperature(°C) 工作温度	-10 ~70°C
IP level 防水等级	IP67
Shell material 外壳材质	Aluminum 铝合金

五通JIS轴 BBTSI/3

BB JIS SHAFT BBTSI/3

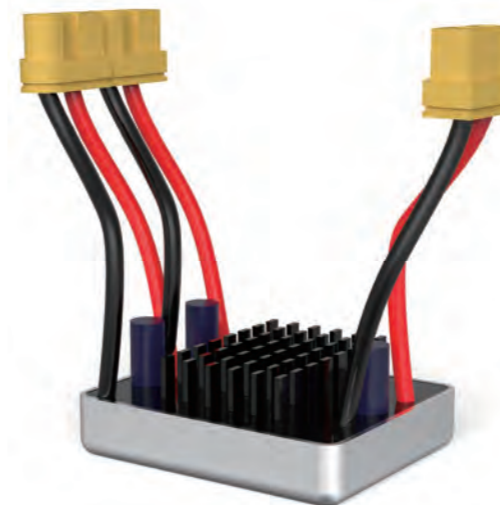


Product Parameters 产品参数

输入电压 Input Voltage	4.5~5.5V
输入功率 Input Power	<0.2W
力矩输出电压 Torque Output Range	0.74~3.3V
力矩信号斜率 Torque Signal Slope	35mV/N.m
力矩测量范围 Torque Measuring Range	0.5~80N.m
速度信号脉冲数 Speed Signal Pulse	32r/36r
速度信号占空比 Speed Signal Duty Cycle	40%~60%
设计标准 Design Standard	EN14764/EN14766/ISO13849
碗组牙规 Cup Set Thread Specification	BC 1.37*24T
齿盘规格 Crankset Construction	1pcs/2pcs/3pcs 齿盘 crankse
五通宽度 Bottom Bracket Wdth	68/73/84/100/120 mm
防护等级 Waterproof Grade	IP65
工作温度 Working Temperature	-20~60°C
储存温度 Storage Temperature	-30~80°C

双电池均衡器 7280

Dual battery balancer 7280



Product Parameters 产品参数

Size (mm) 尺寸	51.8*51.8*10.5
Operating Voltage (V) 工作电压	7V~72V
Maximum single pass current (A) 最大单路通过电流	40A (≤8min)
Maximum double pass current (A) 最大双路通过电流	80A (≤8min)
Single continuous working current (A) 单路持续工作电流	30A
Double continuous working current (A) 双路持续工作电流	60A
Standby current (mA) 待机电流	4mA
Operating Temperature(°C) 工作温度	-10 ~70°C
IP level 防水等级	IP67
Shell material 外壳材质	Aluminum 铝合金

智能双电池模块

Intelligent Dual Battery Module

Product Parameters 产品参数

Size (mm) 尺寸	90*45*23
Operating Voltage (V) 工作电压	24V/36V/48V
Rated Power (W) 额定功率	250W ~1500W
Maximum single pass current (A) 最大单路通过电流	50A (≤20min)
Maximum double pass current (A) 最大双路通过电流	80A
Single continuous working current (A) 单路持续工作电流	40A
Double continuous working current (A) 双路持续工作电流	60A
Standby current (mA) 待机电流	20mA
Static current(uA) 静态电流	300uA
Working Temperature 工作温度	-20~90°C
IP level 防水等级	IP67
Shell material 外壳材质	Aluminum 铝合金



智能离线编程器

Intelligent Off-line Programmer

Product Parameters 产品参数

Communication Mode 通讯方式	Wired有线
Com.protocol 通信协议	UART/CAN
Size (mm) 尺寸	90*70*28
Colour 颜色	Black黑色
Applicable scenarios 适用场景	Update firmware 固件更新
Working Temperature 工作温度	-20~45° C

Product Features 产品特点

- High speed ; Stable 高速; 稳定
- Add buzzer sound reminder 增加蜂鸣器声音提醒



双驱控制器介绍

Introduction of dual-drive



该款双驱控制系统的主要特点：两个控制系统内部互相通讯，解决了速度差问题造成的骑行不适感和安全隐患，使骑行更舒适动力更足。相较于同等功率输出的单驱系统，由于前后驱动分别承担功率，在同等功率下骑行，两台电机的效率更高，启动扭矩更大，并可延长电机和电池的使用寿命。

系统适配更灵活：可适配LED、LCD、TFT等各种仪表，支持转把、速度传感器和力矩传感器等。

The main feature of the dual-drive control system: the two control systems communicate with each other internally, which solves the problem of discomfort and safety hazards caused by the speed difference, and makes the riding more comfortable and more powerful. Compared with a single-drive system with the same output power, because the front and rear drives separately bear the power, riding at the same power, the two motors have higher efficiency, larger starting torque, and can extend the service life of the motors and batteries.

System adaptation is more flexible: it can be adapted to various displays such as LED, LCD, TFT, etc, and supports throttle, speed sensors and torque sensors.